

## ATEX Compression Load Cell DHA500

Robust digital ATEX certified heavy duty compression load cell produced in stainless steel and hermetically sealed to IP68 for installation under large silos, tanks, vessels and heavy duty applications. The DHA500 load cell can be used in ATEX (Ex) and non-ATEX applications

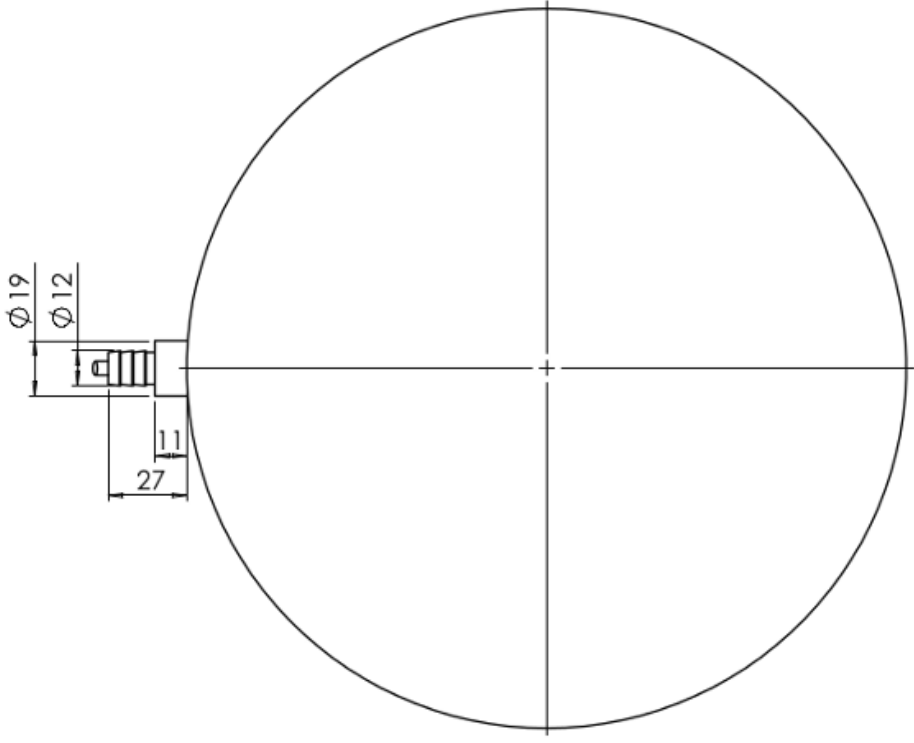
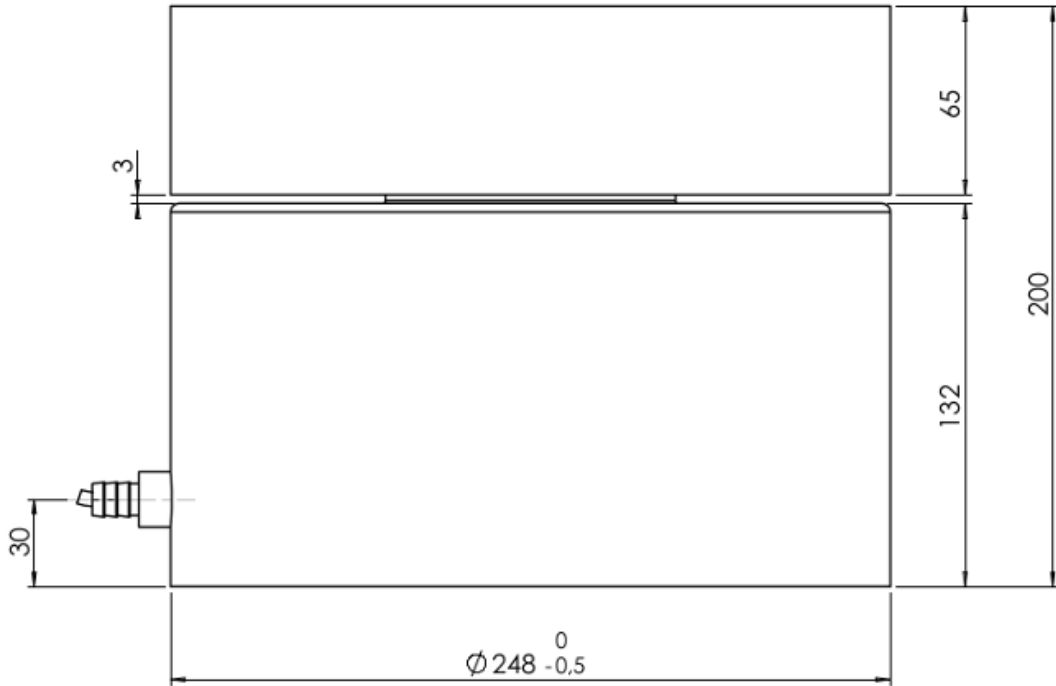
<b>Type:</b>	DHA500 (ATEX) DH500 (Non-ATEX)
<b>Capacity (Emax):</b>	200, 300, 400, 500tons
<b>Accuracy:</b>	Industrial 0.25%
<b>Overload Tolerance:</b>	Up to 300% of rated capacity

- Made in Denmark
- ATEX certified (Zone 1, 2, 21, 22)
- Robust capacitive technology
- High tolerance of up to 300% overload
- Stainless steel 1.4542 (17-4 PH)
- Hermetically sealed to IP68
- Laser welded with Duplex 1.4462 stainless steel
- Can be supplied with Mud resistant and Halogen free cables for offshore installation
- Withstands welding voltages and ESD
- Capacity (Emax): 200, 300, 400, 500tons

- Accuracy: Industrial 0.25%
- Cable length up to 100meters
- Load cell cable replaceable
- Pre-calibrated with signal in kg or kN
- Calibration independent of cable length
- Easy mechanical and electrical installation
- Can be used in both ATEX and non-ATEX installations

- [Digital Compression Load Cell Type DH Dimensions PDF](#)
- [4000 Generation ATEX Certificate SEV07 ATEX 0150 \(GERMAN\) PDF](#)
- [4000 Generation ATEX Certificate SEV07 ATEX 0150 \(ENGLISH\) PDF](#)

- [DH DHA500 Compression Load Cell STEP 3D CAD File \(right click -> "Save Link As..."\)](#)
- [Guideline Correct Mounting of BNC Connector \(UK\) PDF](#)
- [VIDEO - Correct Mounting of BNC connector](#)



Parameter	Unit	0.25%
Rated capacity ( $E_{max}$ )	ton	200, 300, 400, 500
Safe overload limit	% of $E_{max}$	Up to 300
Safe sideload limit	% of $E_{max}$	Up to 300
Combined accuracy	% of $E_{max}$	0.250
Repeatability	% of $E_{max}$	0.080
Hysteresis	% of $E_{max}$	0.080
Creep 30 min.	% of $E_{max}$	0.080
Temperature effect on zero	% /10°C	0.150
Temperature effect on sensitivity	% /10°C	0.120
Compensated temperature range	°C	-10 to 50
Operating temperature range	°C	-50 to 70 (100*)
Deflection at $E_{max}$	mm	max 0.10
Measuring rate	Hz	500
Supply	Vdc	24Vdc ±5%
Internal resolution	Bit	24
Material		Stainless Steel 17-4PH and AISI316
Protection		IP68
Cable		6meter standard coaxial RG-58 (Ø6mm) with BNC connector
Maximum cable length	m	100
Weight	kg	75

Output options

EtherNet/IP, PROFINET, EtherCAT, Profibus DP, Modbus TCP/IP, DeviceNet, RS485, 4-20mA, 0-10Vdc

**\* with Teflon cable**

- Silo weighing
- Process weighing
- Heavy duty applications
- Level measurement
- Offshore applications

- ATEX (Zone 1, 2, 21, 22) version type DHA
- ATEX II 2G Ex ia IIC T6 / ATEX II 2D Ex iaD 21 T85°C
- Load cell cable length 10, 20, 50 or 100meters
- Mud resistant and Halogen free cables for offshore installation
- Special PE load cell cable available for freezing low temperature (can be used down to -50 degrees Celsius)
- Special Teflon load cell cable available for very high temperature (can be used up to 100 degrees Celsius)